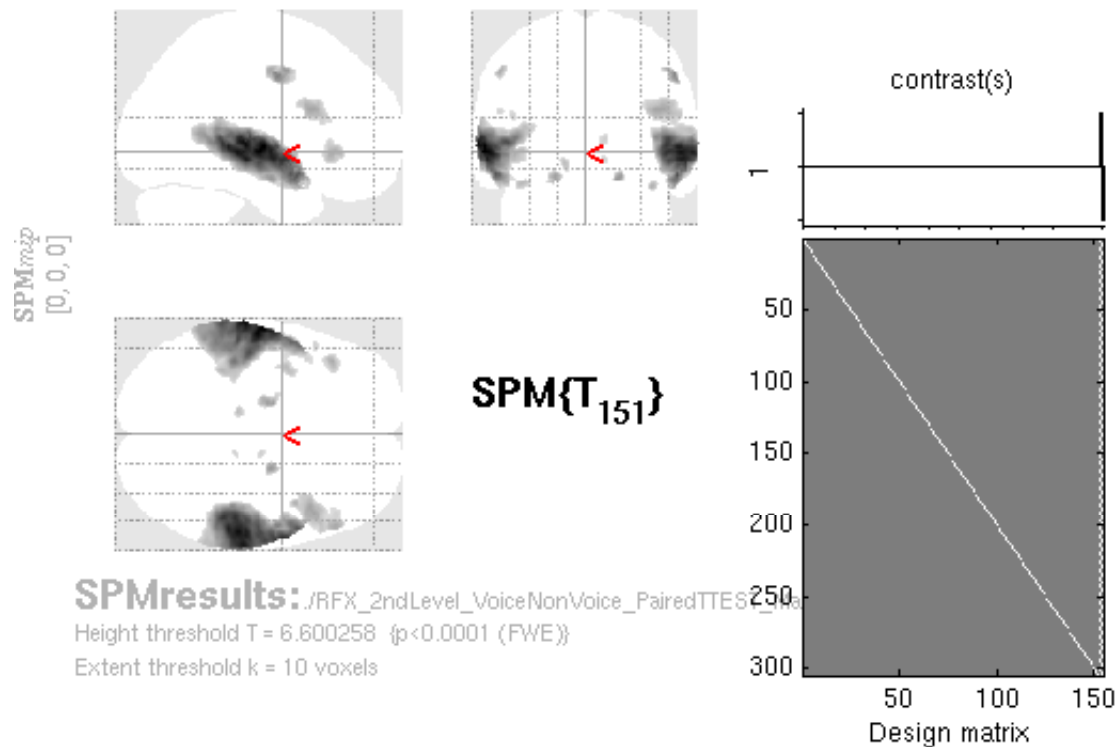


RFX_Voice_Vs_NonVoice



Statistics: p-values adjusted for search volume

set-level		cluster-level				peak-level					mm mm mm		
D	C	D _{FWE-corr}	q _{FDR-corr}	k _E	D _{uncorr}	D _{FWE-corr}	q _{FDR-corr}	T	(Z _≡)	D _{uncorr}			
0.000	15	0.000	0.000	185270.000	0.000	0.000	18.08	Inf	0.000	0.000	-61	-11	3
							0.000	0.000	17.29	Inf	-65	-22	4
							0.000	0.000	16.27	Inf	-59	-5	-4
		0.000	0.000	182750.000	0.000	0.000	16.98	Inf	0.000	0.000	57	-27	-1
							0.000	0.000	15.61	Inf	61	-1	-6
							0.000	0.000	15.50	Inf	49	-28	0
		0.000	0.000	452 0.000	0.000	0.000	11.27	Inf	0.000	0.000	54	-3	43
		0.000	0.000	205 0.000	0.000	0.000	10.16	Inf	0.000	0.000	20	-7	-15
		0.000	0.000	343 0.000	0.000	0.000	9.79	Inf	0.000	0.000	-18	-9	-14
		0.000	0.000	2221 0.000	0.000	0.000	9.50	Inf	0.000	0.000	44	17	24
							0.000	0.001	7.97	7.27	55	24	22
							0.000	0.355	6.82	6.35	48	29	17
		0.000	0.000	632 0.000	0.000	0.000	9.40	Inf	0.000	0.000	54	32	-1
		0.000	0.000	188 0.000	0.000	0.000	9.27	Inf	0.000	0.000	-51	-7	47
		0.000	0.000	570 0.000	0.000	0.000	9.22	Inf	0.000	0.000	-42	30	-1
		0.000	0.000	102 0.000	0.000	0.000	9.15	Inf	0.000	0.000	40	7	-20
		0.000	0.000	114 0.000	0.000	0.000	8.34	7.55	0.000	0.000	-13	-27	-6
		0.000	0.000	76 0.000	0.000	0.000	0.020	7.41	6.83	0.000	11	-13	7
		0.000	0.002	33 0.002	0.002	0.000	0.022	7.38	6.81	0.000	11	-29	-5
		0.000	0.002	37 0.001	0.001	0.000	0.026	7.35	6.78	0.000	-52	19	23
		0.000	0.000	105 0.000	0.000	0.000	0.056	7.19	6.66	0.000	-44	14	21

table shows 3 local maxima more than 8.0mm apart

Height threshold: T = 6.60, p = 0.000 (0.000) Degrees of freedom = [1.0, 151.0]
 Extent threshold: k = 10 voxels, p = 0.065 (0.000) FWHM = 6.5 6.3 6.0 mm mm mm; 6.5 6.3 6.0 (voxels)
 Expected voxels per cluster, <k> = 2.941 Volume: 877339 = 877339 voxels = 3378.7 resels
 Expected number of clusters, <c> = 0.00 Voxel size: 1.0 1.0 1.0 mm mm mm; (resel = 246.15 voxels)
 FWEp: 5.186, FDRp: 7.348, FWEc: 1, FDRc: 33